

Broadcaster

March 14, 2012

TO BE A HEALTHY CONGREGATION

Periodically in my work as transitional (interim) minister, I read sections of the very informative book, *"Healthy Congregations,"* by Peter L. Steinke. Perhaps I'm attracted to it more than other writings on this subject because Rev. Steinke analogizes congregational health to human health, which touches on my careers in medicine and ministry. He begins his book by appropriately pointing out that "health," whether of a congregation or of oneself, means that all of their respective parts are working together to maintain balance under a wide assortment of challenges, internally and externally. So we can see what the apostle Paul meant when he developed his concept of the "Body of Christ" based on the same analogy, as he envisioned a universal church in which all of its parts would function through interaction and cooperation under the umbrella of God's love. In fact, this analogy became a strong symbol of Christian unity, being cited 37 times in New Testament letters.

Transitional ministry usually begins with an assessment of the overall health of the congregation, and if concerns adversely affecting its health are identified, continues with steps to alleviate or eliminate them. My preferred process for working on such concerns is open, confidential, one-on-one dialog.

In my first five months with you, many in the congregation came by my office to discuss church-related concerns. Virtually all of them were historical in nature, and were still being painful, emotionally and spiritually. Discussion of them seemed to provide a degree of relief that was conducive to opening hearts and minds to a bright vision for the church. As we entered the New Year, cessation of visits led me to believe that the health of the congregation was at an optimal level.

But apparently not so! My first indication of this came from the Stewardship Board, which was finding that a major reason for the substantial decline of the member total pledge for 2012 was residual negativity towards the church stemming from past ministry, in some instances coupled with a wait-and-see attitude directed towards the nature and quality of ministry of the yet-to-be-called senior minister. The second indication came from mostly historical concerns strongly expressed in some responses to the recent congregational survey, taken for the development of a current Church Profile to be used in the search for the new Senior Minister.

As I have said many times over the seven months of my ministry here, this church stands out as a vibrant community of faith not only in the United Church of Christ, but also in Glenview and its surrounding communities. This could have been accomplished only by the whole congregation working as one in responding to God's purpose for it over the years.

Rev. Steinke said, "A healthy congregation is one that actively and responsibly addresses and heals its disturbances." Let us continue to work together to understand and ease concerns of the past, and so create a wide-open road to the future for the church.

Yours in Christ,

Doug

WORSHIP SERVICES

MARCH 18, 2012

Fourth Sunday in Lent

8:00 a.m. *A Time for Reflection*

10:00 a.m. *Community Worship*

Sermon:

"Healing Relationships: Forgiveness"
Elizabeth Hartung Ciccolini, Seminarian

MARCH 25, 2012

Fifth Sunday in Lent

8:00 a.m. *A Time for Reflection*

10:00 a.m. *Community Worship*

Sermon:

"Healing Relationship Promises"
Rev. Dr. Pam Keckler

APRIL 1, 2012

COMMUNION

Palm Sunday

8:00 a.m. *A Time for Reflection*

10:00 a.m. *Family Worship*

Sermon:

"Riding On"
Rev. Dr. Doug Busby

APRIL 5, 2012

Maundy Thursday

7:30 p.m. *Community Worship*

Sermon:

"The 'Last Supper'"
Rev. Dr. Doug Busby

APRIL 6, 2012

Good Friday

7:30 p.m. *Community Worship*

*Choral Commemoration, Chancel Choir,
and Seven Last Words*
Rev. Dr. Doug Busby



SURVEY RESULTS PRESENTATION

Join us Sunday, March 18th, in the Mayflower Room during coffee hour for a presentation by the Senior Minister Search Committee highlighting key results from the recent GCC church survey.

Hope to see you then!

The Senior Minister Search Committee

Tom Aldrich, Mike Lauesen, Steve Brown, Michael McGuire, Kara Clark, Pam Reidy, Ed Detwiler, Brad Smith, Jane Hund, Sally Thuresson, Chair

USHERS NEEDED

Are you a new member of the GCC family? Have you been a member for awhile and are looking to increase your involvement at GCC? Become an usher. It is a great way to meet the growing family of GCC and provide a service to the church without a big time commitment. Volunteering to be an usher will strengthen our congregation and enrich not only your life but the lives of all our GCC family. If you are interested in finding out more, please contact John Roth at jwrlcd95@yahoo.com or (847)832-9282.

GOT NAME BADGE?

If your name appeared in the 2011-2012 GCC Membership Directory, there is a Name Badge for you!

Head down to coffee hour in the Mayflower Room after the Community Worship Service to pick up yours!

NEW COMMITTEE

We are formally kicking off the GCC Communications and Technology Committee. If you are interested in the committee, or wish to learn more, please feel free to contact Christopher McGuire using the below contact details:

Contact Information:

Christopher R McGuire
Christopher.R.McGuire@gmail.com
(312)972-9724

ADULT EDUCATION

March 18 at 8:50 a.m. in the Chapel

Working for Social Justice. Is this a Christian duty? Come hear what Marcus Borg, Dominic Crossan and Helen Prejean have to say about Social Justice. Our own Pam Riedy will also bring us her perspective and tell her experiences.

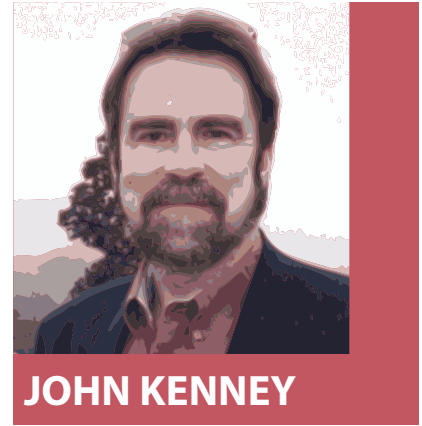
MARCH 25 at 8:50 a.m. in the Chapel

The Spirituality of Meditation. Our Parish Nurse, Marilyn Belleau, has led many meditation sessions through the medium of Lectio Divina, a process of reading and meditating on scripture. Marilyn will demonstrate how Lectio Divina can open our hearts and minds to the "still small voice" of the sacred.



GRETCHEN GRAD, A LOCAL HERO!

We're delighted to announce that on February 21, 2012, the founder of Hands of Peace, Gretchen Grad, was given the "Human Rights Champion Award" at the first Annual 10th Congressional District Community Leadership Awards ceremony. Hundreds of people were nominated for seven awards that included Excellence in Education, a Veteran's Friend Award, an Entrepreneurial Excellence Award, Athlete of the Year Award, Volunteer of the Year Award and Friend of the Environment Award, alongside the Human Rights Champion Award. Congressman, Robert Dold, established these awards to recognize individuals in our community who work passionately to solve problems and improve the lives of others, and in so doing go above and beyond the norm. After ten years of tireless effort on behalf of Hands of Peace, our Gretchen is definitely worthy of this honor!



JOHN KENNEY

COMMON GROUND

"2012 Campaign Snapshots" is the title of the next Common Ground presentation at GCC in the Founder's Room at 7:00 p.m. on Friday, March 23. Jim Kenney will speak on the issues, candidates, and trends as he examines not only the presidential race including the Republican primaries as well as Congressional and statehouse races. Come and help forge an analysis of this extraordinary political excitement. A \$10 donation will be accepted. Bring a friend who agrees with your present views and another friend who differs. We will all learn together.

WHO ARE THEY? WHAT DO THEY DO?

Mary Lou Aagard, representative on State Issued Committee, League of Women Voters will speak to the purpose of the league and how to be an informed voter.

In an election year what should one know about the candidates and the issues?

Come with your questions to Chapter 20 open meeting Wednesday, March 21 in the Chapel, business meeting 9:30 a.m., program at 10:00 a.m.

All are welcome.

PASTORAL CARE

Our prayers and sympathy are extended to the family of Edna Lohn who died March 7, 2012.

A memorial service will be held at a future date.

CONFIRMATION

Confirmation Classes will meet as normal on March 18. No classes for spring break through Easter Sunday. We will resume our schedule on April 15. 8th graders will have a special Sunday class on April 15 from 9-11

8TH GRADERS

You will have a two hour session with PYF on Sunday, April 15 from 9:00 a.m.-11:00 a.m. in the Youth Room.



678 CLUB

678 Club will meet next Sunday, March 18. Participants will put together Easter baskets for children. Come to the Youth Room from 2:00 p.m - 3:30 p.m. and bring a basket with some of your favorite items to put in it (plastic eggs, inexpensive toys, etc.).

678 PARENTS

678 Parents will meet March 18 beginning at 9:00 a.m. in Room 5 to continue their discussion on drugs and alcohol. Drop off your Confirmand and then join us!

PYF WINTER FUN

March 18th:

We will make Easter baskets for the Northfield Township Food Pantry. Please bring some of the following items; candy, new toys (under 15 dollars), art supplies, plastic Easter Eggs, etc. 4 - 6 pm in the Youth Room.

April 1:

"GAME ON"

4:00 - 6:00 p.m. at GCC. See you then!

THE GIVING OF BIBLES TO THE FOURTH GRADE SUNDAY SCHOOL CLASS

Peyton Eileen Bond
Mitchell Brown
Jack Allen Christiansen Jr.
Lauren Elizabeth Hartung Ciccolini
Ailla S. Clark
Tegan S. Clark
Jessica Jeanette Ehlinger
Sarah Eileen Eshoo
Mark Jefferson Kritzman
Lauren Lee Loeber
Sarah Elizabeth Lothian
Charlotte Victoria Matik

Thomas Morgan
Caitlin Jade Noe
Daniel Patterson O'Brien
Karin Elizabeth Olson
Max O'Mera
Trenton Bryce Paul
Ashleigh G. Roth
Caroline Rose Sultz
Kendall Vega
Katerina Rose Wagner
Brendan Wolf
Gracie A. Tyrrell



SUNDAY SCHOOL RAP

It has been requested that the blockbuster call to worship/rap, created and delivered by the fourth graders, be shared in the Broadcaster. Thanks also to teacher Diane Christiansen.

ABC elementary, B to the I to the BLE. The Bible is the book that's off the hook, so come with me and take a look.

THE WORD, THE WORD,
THE BIBLE IS THE WORD.

Noah was the dude that built the Ark, he knew it wasn't gonna be a walk in the park. He prayed to God, who told him what to do and lined up the animals two by two.

THE WORD, THE WORD,
THE BIBLE IS THE WORD.

Adam and Eve were hanging in the garden, but a snake with an apple made Eve a bad bargain.

THE WORD, THE WORD,
THE BIBLE IS THE WORD.

My brother was jealous because he was broke. He sent me down south and that's no joke. He sent me away, but the joke was on him. He thinks my chains are shaking, but my own wealth I'm making.

THE WORD, THE WORD,
THE BIBLE IS THE WORD.

Pharaoh had to deal with the bad plagues all because he would not free the slaves. The Hebrew people put blood on their doors, so their sheep wouldn't die and they wouldn't be poor.

THE WORD, THE WORD,
THE BIBLE IS THE WORD.

The disciples were the ones who liked to fish. Then they caught the big fast fish. They left all of that to follow Jesus, who knows how to live and teaches us.

THE WORD, THE WORD,
THE BIBLE IS THE WORD.

Once there was a boy who gave up two fish. He gave up five loaves and didn't mind a bit. Then Jesus spread around the bread and fish and there was no hunger for all those lucky kids.

THE WORD, THE WORD, THE BIBLE IS THE WORD
THE WORD, THE WORD, THE BIBLE IS THE WORD. AMEN.

THE WORD, THE WORD,
THE BIBLE IS THE WORD

WALKING PRAYING MEDITATING



The Labyrinth

Coming April 1st in the Mayflower Room

What is it?

A Labyrinth is a spiritual tool dating back to ancient times. It offers a pathway of prayer and a walking meditation. It is not a maze, with tricks, obstacles, dead ends, and many paths; a labyrinth has a single pathway for entering and exiting. No directional decisions are necessary. Its whole is always visible; the Labyrinth represents a blue print for your heart and soul.

History:

The earliest Labyrinths date from 3000 to 2500 BC. Labyrinth designs have been discovered among early Christian communities around 400 AD. During the 12th to 14th centuries, numerous cathedrals in Italy, Spain, and France had labyrinth designs built into the floor. The most renowned surviving labyrinth is in Chartres Cathedral, near Paris. It's believed that Christian pilgrims who could not afford to make the long journey to the Holy Land walked the

Labyrinth as a metaphor for their journey to Jerusalem.

Spiritual Relevance for Today:

Walking the Labyrinth is a personal journey. The single pathway that leads you to the center and out again enables you to free your mind from mundane thoughts and concentrate on the sacred. Your walk, pace, and personal experience are all your own. When will I be able to participate in the Labyrinth experience?

You are invited to walk the labyrinth at GCC in the Mayflower room on your choice of dates and times: Sunday, April 1, 9 am to 12 pm; Monday, April 2, Tuesday, April 3, and Wednesday, April 4, 4:00 pm to 8:00 pm. Guides will be available during these times. You are also welcome to walk any time the church is open.

(sponsored by the Pastoral Care Board)

LENTEN SOUP AND TAIZE WORSHIP SERVICE

WEDNESDAY EVENINGS

Join us for a simple supper from 5:45 p.m. - 6:30 p.m. in the Mayflower Room, followed by a Lenten Taizé worship service in the Sanctuary from 6:30-7:00 p.m. each Wednesday night in March. We still need a group or individual to host two meals – soup and bread – on March 21 and 28. You will be reimbursed for your expenses. Please see Rev. Keckler if you can help.



BRING A TOUCH OF EASTER BEAUTY TO OTHERS!

All members should have received the letter, requesting the donation of Easter Lilies to decorate the Sanctuary for Easter Sunday, April 8th. We appreciate the ones that have been returned and ask those who haven't returned their orders to join in bringing joy on Easter and honor to those who you love and remember.

Also, volunteers are needed to help deliver Easter Lilies after our celebration at church. It is a wonderful way to reach out to church members and friends, who are ill or home-bound. It takes a little of your time but means so much to those receiving the plants. It is a connection with GCC that many anticipate and appreciate so much. You may pick up the lilies for delivery after the 11:00 a.m. Service on Easter Sunday, April 8th, or pick them up at the front Church door between 11:00 a.m. -12:00 p.m. on Monday, April 9th.

If you are interested in helping with the delivery, please call Mary Ellen Johnson at (847)998-1363 or email at menlcsw@aol.com. Thanks so much in advance.

BIBLE STUDY ON THE GOSPEL OF MARK

Our Lenten Bible study of the Gospel of Mark continues each week. You are welcome to join us any time. We meet on Monday evening from 7:00-8:15 p.m. or on Wednesday morning from 10:30-11:45 a.m. The classes are structured the same so you may interchange days/nights per your schedule. Join our lively discussions in Room 5. Questions, contact Rev. Pam Keckler.

INDIVIDUAL MEDITATION AND PRAYERS

Remember that the Chapel is open each day, Monday through Friday from noon until 5 pm if you wish to come for some quiet reflection and meditation time. Enter from the West Entrance.

MINISTRY FOR BUSY PEOPLE VOLUNTEER OPPORTUNITIES

Years ago, members would approach me saying how much they would love to help, but were just too busy. It didn't take me long to develop what I call my **Ministry for Busy People**. The following are volunteer opportunities which do not require much time. Please think about joining one of these programs:

We Care Committee: Willingness to provide services to other church family members in need of temporary help. Some of these services are – driving to the doctor's appointments, shopping, running errands or emergency cooking. All you need is a desire to respond occasionally as your schedule allows.

Prayer Chain: A weekly telephone ministry, you receive the prayer requests and call one person on the chain and share these requests. You are then asked to pray for those requests.

Privileged Visitors: You will be assigned a home-bound member to visit. The message is to let them know that the church cares about them. I ask that you visit at least once a month. No training or meetings involved.

Please call 847-724-2210 ext. 230 or email marilyn.belleau@gccucc.org if you would like more information or would like to volunteer. None of the above programs require much time, yet they make such a difference in a member's life and in the life of this church.

For those who feel called to a more structured visitation program, we have the **Called to Care Ministry**. This is a lay pastoral care program offered on a short-term basis. You will provide a listening presence, compassionate caring and a prayerful heart to a member of the church. You are asked to make weekly visits to this individual. **Called to Care Companions** attend monthly supervision meetings where a variety of life issues and ministerial topics are discussed. If you or another church member could benefit from this program,

continued next column

please contact me. If you would like to discuss becoming a **Called to Care Companion**, I would appreciate hearing from you.

Marilyn Belleau, *Advocate Parish Nurse*

ALZHEIMER'S & RELATED DEMENTIAS SUPPORT GROUP

PRESENTED BY:

Marilyn Belleau, *R.N., Parish Nurse*

Courtney Bouker, *LNHA*

Mike Denesha, *Support Group Leader,
Arden Courts of Northbrook,
Family Caregiving*

Caring for a loved one with Alzheimer's disease or related dementias can be rewarding and a life changing experience. It can also be the most difficult of tasks and can take a serious toll on the mental and physical well-being of the caregiver. Current statistics show that almost 10 million Americans are caring for a person with Alzheimer's disease and related dementias.

Arden Courts of Northbrook, together with Glenview Community Church, welcome you to attend the monthly Alzheimer's and Related Dementia Support Group. With a clear understanding of the disease, education on specific care needs and issues, and support from others in the same situation, there can be life after diagnosis.

The support group will provide education and support for the entire family. Gain strength from others who face the challenges of caring for someone with Alzheimer's disease or related dementia. Support groups offer emotional support and information, as well as, provide a safe and positive setting to express fears and concerns and to share experiences.

The group meetings are free and open to the public. No reservation necessary.

Support Group meetings will be held from 1:00 p.m. – 2:30 p.m., the fourth Thursday of every month. The first meeting will be on March 22, 2012 at the Glenview Community Church Library at 1000 Elm Street, Glenview, IL.

continued next column

For questions regarding the Support Group or other memory care services, please contact Courtney Bouker at (847)795-9000.

Co-Sponsored by Advocate Health Care Parish Nurse Ministry and Arden Courts of Northbrook Memory Care Community.

60 PLUS LUNCHEON TUESDAY, MARCH 20, 2012 AT 12 NOON

Mark your calendar now for a special presentation and slide show by Hands of Peace. Come learn what the teens from Israel, Palestine and America have experienced through this organization. Hear from those who just returned from a trip to Israel. Soup, bread, and an amazing dessert will be provided. Bring your friends.

Need a ride? Call Marilyn, Advocate Health Care Parish Nurse at (847)724-2210 ext. 230.

TROUBLE HEARING THE LESSONS & SERMONS?

Hearing loss tends to occur gradually and at the higher frequencies that are important for intelligibility. If you think your hearing could be better, or even are already wearing a hearing aid, try the assisted listening system at GCC. The supply of receivers has just been augmented with four additional units. Receivers and information sheets on the hearing units are available before the service in the Narthex near the south entrance to the Sanctuary. If you need help, ask an usher for assistance.

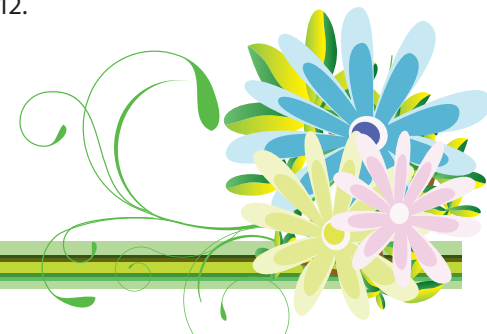
WELCOME NEW MEMBERS

Matthew Brackett,

Monica and Pat Donohue and sons; Ryan (8), Nicholas (5), Sean (2) and Connor (8 months),

Meredith Estes and daughter Brook (3),

We welcome these five new members and their families who joined GCC on March 11, 2012.





TRIP MISSION STATEMENT

To bring together a multicultural group eager to explore the diversity and complexity of the region.

To experience the region's spiritual and historical richness, its current political realities, and its cultural abundance.

To engage with people whose personal stories bring to life both sides of the conflict.

To provide a broadened perspective that will raise awareness and foster the belief that peace is possible!

JOIN US FOR OUR 2ND ANNUAL HOP-SPONSORED TRIP TO ISRAEL AND PALESTINE

WHEN? *October 27 – November 7, 2012*

WHAT? Custom-created for Hands of Peace; this is an exceptional dual-narrative travel experience that will offer a unique vantage point on peace-building efforts in Israel and Palestine. Facilitated by MEJDI Tours, the itinerary will include a local Israeli and a Palestinian tour guide that will accompany the group for the entire 10-day journey. This is a very rare opportunity to interact with people and visit places on both sides of the conflict, and learn about real peace-building efforts on the ground in Palestine and Israel. Attendees will also have opportunities to connect with Hands of Peace participants and other inspiring peace-building organizations.

WHERE? The expedition will travel to significant religious, cultural and political sites throughout Israel and Palestine, and will integrate the multiple narratives of the region.

COST? The land package costs \$2,495 and includes accommodations, transportation, most meals and admission fees. This price also includes a tax-deductible, \$400 donation to Hands of Peace.

An optional group flight has been arranged for those traveling from Chicago. Trip participants are also free to make their own flight arrangements if they choose. The group flight option would cost approximately \$1,876 round trip.

Travel insurance is the responsibility of the trip participants.

ARE YOU INTERESTED?

If you are interested in participating, or have questions, please contact Ellen Ewing at esecoops@aol.com, or (312) 404-1907. Ellen is the HOP contact for everything related to this trip.

Space is limited! Tickets are now on sale and can be purchased online at <http://hop-israel-palestine-tour.ettend.com>. If necessary, use the password HOP2012.

About MEJDI Tours: MEJDI is a joint Jewish-Arab tour operator that creates custom group tours to Israel, Palestine, Turkey, Jordan, and Egypt. Guided by a mission to provide responsible tour experiences and invest in the communities where they work, MEJDI provides clients with access to people and places that traditional tour companies cannot reach. As a result of this unique business model, our clients get to hear different perspectives, participate in new cultural experiences, and go behind closed doors to meet local religious, political, and tribal leaders. (www.mejdi.net)

TWO WEEK LOOK AHEAD AT GCC

THUR	9:00 AM	Resale Shop until 5:00 PM, Plymouth Rm
3/15	9:00 AM	GCC Yoga, Narthex
	12:00 PM	Lenten Meditation, Chapel
	7:30 PM	Chancel Choir Rehearsal, Choir Rm & Sanctuary
FRI	9:00 AM	Resale Shop open until 1:00 PM, Plymouth Rm
3/16	12:00 PM	Lenten Meditation, Chapel
	1:00 PM	GCC Historical Project, Parlor
	1:30 PM	GCC Pickleball, Gym
	6:30 PM	CSA 156 Blue and Gold Dinner, Mayflower Rm
	7:00 PM	Volleyball, Gym
	8:00 PM	AA Meeting, Parlor
	8:00 PM	Al-Anon, Rm 201
SAT	9:00 AM	Men's Open Gym, Gym
3/17	9:00 AM	Resale Shop open until 1:00 PM, Plymouth Rm
SUN	7:30 AM	Wellness Screening, Plymouth Rm
3/18	8:00 AM	Reflective Worship Service, Transept
	8:50 AM	Adult Education, Chapel
	9:00 AM	Confirmation Opening Prayers, Youth Rm
	9:15 AM	Confirmation Classes, Various Rms
	9:15 AM	Primary Choir Rehearsal, Rm 201
	10:00 AM	Community Worship, Sanctuary
	10:00 AM	Sunday School Classes begin in Rm 201
	11:00 AM	Fellowship Hour, Mayflower Rm
	11:15 AM	Joyful Ringers Rehearsal, Bell Rm
	11:15 AM	Leadership Mtg., Founders Rm
	2:00 PM	678 Club, Youth Rm
	3:30 PM	Voices of GCC, Rm 201
	4:00 PM	PYF, Youth Rm
MON	12:00 PM	Lenten Meditation, Chapel
3/19	1:30 PM	Pickleball, Gym
	7:00 PM	Finance Board, Founders Rm
	7:00 PM	BSA 156 Committee Mtg, Parlor
	7:00 PM	Lenten Bible Study, Rm 5
TUES	12:00 PM	Lenten Meditation, Chapel
3/20	12:00 PM	60 Plus Luncheon, Mayflower Rm
	6:30 PM	Sing to Live Rehearsal, Sanctuary
	7:30 PM	Choir Director Search Committee, Parlor
WED	9:00 AM	Resale Shop open until 1:00 PM, Plymouth Rm
3/21	9:30 AM	Chapter 20, Chapel
	10:30 AM	Lenten Bible Study, Rm 5
	12:00 PM	Lenten Meditation, Chapel
	1:30 PM	Pickleball, Gym
	5:45 PM	Lenten Supper, Founders Rm
	6:30 PM	Taizé Service, Sanctuary
	6:30 PM	BSA 156 Court of Honor, Mayflower Rm
	7:00 PM	Senior Minister Search Committee, Parlor
	7:00 PM	Venture Crew, Rm 5 & Gym

THUR	9:00 AM	Resale Shop until 5:00 PM, Plymouth Rm
3/22	9:00 AM	GCC Yoga, Narthex
	12:00 PM	Lenten Meditation, Chapel
	1:00 PM	Alzheimer's & Dementias Support Group, Library
	6:30 PM	Voices of GCC Rehearsal, Rm 201
	7:30 PM	Chancel Choir Rehearsal, Choir Rm & Sanctuary
FRI	9:00 AM	Resale Shop open until 1:00 PM, Plymouth Rm
3/23	12:00 PM	Lenten Meditation, Chapel
	1:00 PM	GCC Historical Project, Parlor
	1:30 PM	GCC Pickleball, Gym
	8:00 PM	AA Meeting, Parlor
	8:00 PM	Al-Anon, Rm 201
SAT	9:00 AM	Men's Open Gym, Gym
3/24	9:00 AM	Resale Shop open until 1:00 PM, Plymouth Rm
SUN	8:00 AM	Reflective Worship Service, Transept
3/25	8:50 AM	Adult Education, Chapel
	10:00 AM	Community Worship, Sanctuary
	11:00 AM	Fellowship Hour, Mayflower Rm
	11:15 AM	Joyful Ringers Rehearsal, Bell Rm
MON		Building Closed Due To Com Ed Work
3/26		
TUES	11:30 AM	WA Chapter 8, Founders Rm
3/27	12:00 PM	Lenten Meditation, Chapel
	6:30 PM	Sing to Live Rehearsal, Sanctuary
	7:00 PM	Executive Board Mtg., Mayflower Rm
	7:30 PM	Choir Director Search Committee, Rm 213
WED	9:00 AM	Resale Shop open until 1:00 PM, Plymouth Rm
3/28	12:00 PM	Lenten Meditation, Chapel
	1:30 PM	Pickleball, Gym
	5:45 PM	Lenten Supper, Founders Rm
	6:30 PM	Taizé Service, Sanctuary

Happy St. Patrick's Day

*May your blessings outnumber
the shamrocks that grow,
and may the trouble
avoid you where you go.
~Irish Blessing*



*Oh, the music in the air!
An' the joy that's irywhere -
Shure, the whole blue vault of heaven
is wan grand triumphal arch,
An' the earth below is gay
Wid its tender green th-day,
Fur the whole world is Irish on the
Seventeenth o' March!
~Thomas Augustin Daly*

GLENVIEW COMMUNITY CHURCH
1000 Elm Street
Glenview, IL 60025-2897

Phone: (847) 724-2210
Fax: (847) 724-2213
E-mail: gccucc@gccucc.org

OFFICE HOURS
Monday - Friday
8:30 am - 4:30 p.m.

MINISTERIAL STAFF
Rev. Dr. Douglas Busby, MD, *Transitional Senior Minister*
Rev. Dr. Pamela Keckler, *Minister for Spiritual Formation & Church Operations*

DIRECTORS:
Marilyn Belleau, RN, *Health Ministry*
Kathy Lifton, *Children's Ministry*
Elizabeth Hartung-Ciccolini, *Youth Ministry*
Debby Shellard, *Children's Choirs*
Gary Wendt, *Music & Organist*

AFFILIATES:
Marcia Kiraly, *Director, GCC Nursery School*
Barbara Thewis, *Manager, Resale Shop*

Nonprofit Organization

US Postage
PAID
Glenview, IL
Permit NO. 41

RETURN SERVICE REQUESTED

HIGHLIGHTS OF THIS ISSUE

Adult Education
Common Ground
Sunday School Rap
Coming April 1st in the Mayflower Room
Lenten Soup and
Taize Worship Service
Ministry for Busy People
Trouble Hearing the Lessons & Sermons?

