

Broadcaster

Glenview Community Church

December 9, 2009

The Pilgrim's Progress

The Christian calendar identifies the seasons of the year based on the life of Christ. It is complicated because it is a triple calendar. The Christian Church grew up in the Roman Empire but it was greatly influenced by the Jewish festivals. Some parts of the Christian calendar are governed by the moon and some by the sun and all parts are governed by the intent to trace the work of God in Christ throughout the year. The climatic seasons of spring, summer, fall, and winter mark our journey through the year. The seasons of the Christian calendar mark our journey through the year in worship. The seasons on the Christian calendar are Advent, Epiphany, Lent, Eastertide, and Pentecost. The Church overlaid these seasons on the Roman and Jewish calendars.

Suddenly it's Advent, that strange time of the year that abruptly begins while we are digesting turkey and looking forward to Christmas. Advent begins the fourth Sunday prior to Christmas. This year that was November 29th and now we are half way through the season having enjoyed another excellent presentation of the Pageant last Sunday. Advent is about preparation and expectation. We make our way to church and there seems to be a disconnection between what we experience in our daily lives and our weekly sojourn to church. There is talk at church about waiting, preparing, expecting, and anticipating.

Language fails us. We talk about God coming to the world. Such a statement implies that most of time God is withdrawn and absent from the world. It really is a misnomer to suggest that God came to the world through the birth of Jesus or that God will come to the world again. Such language implies that at other times, most of the time, God is absent from the world. That is not true. God is constantly present in the world. We may be unresponsive, unwilling, or unable to respond to God's presence. The worship season of Advent urges us to be more intentional in our efforts to look for and experience God's presence in the world

and in our lives. The Advent season is about experiencing and encountering God in new and fresh ways that change our patterns and outlook like the birth of a baby changes our schedule, our routine, and our perspective of life.

As we have encounters with the ever-present God, we can expect God to comfort, confront and challenge us. I hope you will be present in worship the last two Sundays of Advent and Christmas Eve so that individually and collectively we can encounter God in fresh and creative ways. May the result be not only that we receive the gifts of hope, love, peace, and joy but also that we become bearers of these gifts to others.

Howard

The message of Christmas is:

- To find the lost
- To feed the hungry
- To release the prisoners
- To rebuild the nations
- To bring peace among the people
- To make music in the heart.

Howard Thurman

Advent Devotional Booklets

Advent began on November 29. A good way to prepare is to take a moment each day to read a brief devotion and pray. Advent Devotional Booklets are still available in the church office and in the Narthex. Feel free to pick up a copy.

SUNDAY SERVICES

DECEMBER 13, 2009

Third Sunday of Advent

Seven Joys of Christmas, Kirke Mechem

A delightful and ingenious arrangement of many of our favorite Christmas carols.

Presented by the Chancel Choir

8:30 a.m.

10:30 a.m.

DECEMBER 20, 2009

MISSION MOMENT

Fourth Sunday of Advent

8:30 a.m.

10:30 a.m.

Chancel Choir

Scripture:

Micah 5:2-5a, Luke 1:39-45

Sermon:

"Pregnant with Expectation"
Rev. Dr. Howard Roberts

DECEMBER 24, 2009

CHRISTMAS EVE

Family Christmas Eve Service

4:30 p.m. "Promises Kept"

Rev. Sally Iberg

Music- Intergenerational Choir & Children's Choir

Meditative Christmas Eve Service

7:30 p.m. "Home is Where?"

Rev. Dr. Howard Roberts

Communion Offered

Celebrative Service of Music, Scripture & Meditation

11:00 p.m. "Home is Where?"

Rev. Dr. Howard Roberts

Music: Festival Choir

Leadership is Seeking

The Leadership Committee seeks nominations for volunteers to serve as Vice Moderator and At-Large Members on the Executive Board for the 2010-2011 church year.

Their volunteer responsibilities can be summarized as follows:

Vice-Moderator-This is the second highest elected lay officer of the Church. This person performs the duties of the Moderator when the Moderator is unable to serve and serves as the Chair of the Leadership Committee.

At-Large Members to the Executive Board: In addition to your responsibilities as a member of the Executive Board for two years, you will also serve on either the Leadership Committee or Personnel and Ministerial Relations Committee.

If you are interested in one of these positions or want to recommend someone else, please contact Lloyd Bettis, Chair of the Leadership Committee for further information on the responsibilities and requirements. He can be reached by email at lbettis@nationalbureau.com or by phone during the day at 312-861-4272.

2010 Stewardship CAMPAIGN



As an update for the 2010 campaign, we have received 461 pledges for a total of \$954,806, that's an increase of 9.1% from 2009. Through this outpouring of generosity, we, as a congregation, continue to show faith in this church and provide a means for this institution to remain firm and committed in growing a strong faith community.

We thank you for your love and commitment to Glenview Community Church. We also welcome those of you who have not responded yet to this campaign and look forward to hearing from you.

It has been a privilege to be a part of this journey with all of you so far this year – and we thank you for the trust and confidence you have given our board in carrying out this important campaign for our church. We look forward to communicating to you as a congregation throughout the rest of this church year with exciting new events you can participate in to continue opportunities for growth and development at GCC....stay tuned!

The 2010 Stewardship Board

Health Screening

Do your legs ache after walking a short distance? If so, you may want to consider being screened for peripheral arterial disease (PAD), a condition in which the arteries that carry blood to the arms or legs become narrowed or clogged by plaque, slowing or stopping the flow of blood. Life Line Screening will bring this preventive health event that can assess one's risk of PAD through an ankle brachial index (ABI). PAD is closely linked to coronary artery disease, and identifying PAD can also help prevent heart attack and stroke. We are pleased to host a screening on Tuesday, January 12, 2010. Register for the Stroke, Vascular Disease and Heart Rhythm Package for \$139. All four screenings take 60-90 minutes to complete. **Your Health is in Your Hands**, so call 1-888-653-6441 for more information or to pre-register.



First Class Broadcaster Mailing

If you would like to have the Broadcaster mailed to you First Class, please return a check to the office marked "First Class Broadcaster Mailing" in the amount of \$22.00. The deadline is December 31, 2009.

ORDER FORMS

Poinsettias, Easter Lilies & Altar Flowers

Order forms were mailed out with the last Broadcaster for poinsettias for our Christmas Eve worship service, our Easter Sunday worship service, and our Sunday altar flowers. Forms are also available in the Narthex, west entrance and church office and on our website www.gccucc.org. Please have your order forms returned to the office by December 14 in order to

THE POINSETTIA GIVING TIME HAS COME...

Our Sanctuary will be beautifully filled with live color for our Christmas services. As usual, we will take them to members and friends of GCC who are not able to attend our Church over the season. If you would like to take the opportunity to deliver a poinsettia, or more, to these homes, please call Mary Ellen Johnson (847-998-1363). Plants can be taken for delivery after the Christmas Eve service or picked up on December 26th. Sharing a part of our Church at this time provides a blessing to those who give and those who receive. Your offer will be greatly appreciated. Pick up poinsettia on December 26 from 10:00 a.m. to 12 noon.



Holiday Light Recycling

DECEMBER 1, 2009 - JANUARY 31, 2010

Mini-lights (or Italian lights), C7 lights, C9 lights, rope lights, LED lights, extension cords, etc. All colors and lengths will be accepted. Garland, live greens, wreathes, or other non-recyclables are NOT accepted.

Drop off your lights at the Village of Glenview Public Works on 1333 Shermer Road. There is a 24-hour outside drop-off. Please call the Glenview Public Works if you have any questions at (847) 657-3030.

REGISTRATION Glenview Community Church Nursery School



The 2010-2011 school year is underway!

Registration dates are:

IN-HOUSE Lottery Deadline
January 13, 2010 – 9:00 a.m.

OPEN HOUSE
January 20, 2010 - 11:00 a.m. -1:00 p.m.

OPEN LOTTERY Deadline
February 3, 2010 - 9:00 a.m.

Please check out our website at www.gccns.com for more information. You can also contact Marcia Kiraly to schedule a tour of the school by calling (847)729-1440 or email Marcia at marciak@gccucc.org.



In the Spirit of the Season...

Sponsor Blankets for The Night Ministry. How do you and your family stay focused on the true meaning of the season? Are you looking for a way to share your blessings? What do you get for the person who has everything? Come to the Mayflower room on Sunday, December 13 or 20 and sponsor a blanket (or two or three...) for our sisters and brothers being served by The Night Ministry. For each blanket you sponsor, you can choose either a card or an ornament to take as a symbol of your commitment to helping those in need.

The Night Ministry was created out of diverse religious traditions to build relationships with vulnerable youth and adults on the nighttime streets. Recognizing the uniqueness, dignity, and value of each person, we accept individuals as they are, in an affirming and compassionate manner. We call the larger community to the same mission (www.thenightministry.org).

Thank you from Chapter 20 of the GCC Women's Association and the Missions Outreach Board.



Help Warm Hearts and Bodies with the GCC Mission Tree Collection December 13 and 20.

GCC is collecting cold weather items for the mission tree: gloves, hats, socks, etc... for distribution through The Night Ministry. The items can be sized for children or adults so this is a great opportunity to involve the whole family in providing for the needs of those served by The Night Ministry. When you drop off your items or make a donation at the Mission Tree display in the Mayflower room, please take an ornament to add to your decorations at home. Thank you from your friends on the GCC Missions Outreach Board.

Greater Chicago Food Depository Work Session

JANUARY 9

Join friends from GCC as we go down to the Greater Chicago Food Depository (www.chicagosfoodbank.org) for a work session on January 9, 2010. We will leave GCC at 12:30 p.m. and should be back by 5:30 p.m. This trip is open to ages 13 and older! GCFD distributes more than 55 million pounds of food each year and frequent volunteer projects involve re-packaging bulk cereal or pasta, sorting bread or canned food donations, or cleaning produce. Please contact Tracy Sawires at esnstsms@hotmail.com with questions or to sign up.

Thank you from your friends on the GCC Missions Outreach Board.

look for

Yummie Goodies from Confirmation Youth

Garage/Bake Sale to benefit **HANDS OF PEACE**



Mr. McGee's 7th grade Confirmation class will be holding a garage/bake sale on Saturday, December 12 from 9:00 a.m. until 12 Noon, and on Sunday, December 13 during both coffee hours in the Mayflower room. All proceeds from this sale will go to **HANDS OF PEACE**.

Bake Sale

to benefit Toys for Tots



You have not missed **"THE LAST CHANCE TOYS FOR TOTS BAKE SALE."** It will be Sunday, December 13, 2009 at both coffee hours in the Mayflower Room.

This bake sale will benefit the Toys for Tots Concert on Saturday, December 19 at 7:00 p.m. The need for toys is greater than ever. Use us, the 7th grade Confirmation Class as your personal shoppers for the Toys for Tots Concert.

See you at the **"LAST CHANCE BAKE SALE"** this Sunday at both coffee hours.

PYFF Advent Vespers Potluck and Program

High school youth and their families are invited to the Advent Vespers & Potluck dinner on December 13, 2009, from 4:00 p.m. to 6:15 p.m. at Glenview Community Church in the Youth Room.

What to Bring?

Freshman Families
bring main dish

Sophomore & Juniors
bring side dishes and salads

Seniors
Bring dessert

It will be an evening for high school youth and their families to share in the **Celebration of Advent** together, as well as good food, fellowship, and dialogue.

"Tips for Staying Connected as a Family"

Parent Discussion: How does Church fit into the family staying connected? Elizabeth Ciccolini will facilitate a discussion on this important dynamic.

There will be open gym and games for the youth while the parents meet with Elizabeth Ciccolini.

Please RSVP to Elizabeth.ciccolini@gccucc.org.



PYF

DECEMBER 20
Youth Room,
4-6 p.m.

PYF White Elephant Gift Exchange, Christmas Party & Letter Writing

This year we will again trade our "treasures" and enjoy time for fellowship before Christmas. We will also write letters to Servicemen who will be away from their homes for Christmas. Join us for this wonderful tradition.

60 PLUS LUNCHEON Christmas Style!

December 15, 2009
12 noon in the Mayflower Room.

Celebrate this holiday season with others, 60 Plus and older, as we enjoy an amazing "Christmas Soup" and "Jolly Dessert"! You'll have the opportunity to sing the Christmas carols we all love as our own GCC member, Al Te Ronde, rocks the keyboard. Join us for an afternoon of fun, festivities and fellowship.



Feel free to bring a friend. Need a ride, call Marilyn Belleau, Parish Nurse at 847-724-2210 ext. 30.



Looking for the Best Christmas Gift you can give?
Women's Winter Retreat January 30-31, 2010

Attention: Spouses, children, parents etc.

Wonder what to give that special woman in your life? We have the answer! Give her a time away that she will remember forever. Let her experience rest and relaxation, with delicious meals and a chance to "get away" or be with others, AND an opportunity to hear Jo Giarrante, Spiritual Director and Supervisor at the Institute for Spiritual Leadership present "Sanctuary of the Heart". The theme is to explore the messages from our hearts that yearn for a safe place to rest, to be noticed, and to be honored. We're going back to the Chicago Marriott Suites in Deerfield. What more could any woman want??

Sign up today as space is limited! Registration forms available in the church office, narthex, and on line. Questions? Call Marilyn at 847-724-2210 ext. 30.



The 16th Annual A Toy-Ful Celebration Holiday Concert TOYS FOR TOTS

The Toy-ful Celebration Concert, to benefit the **U. S. Marine Corps Reserves Toys for Tots** campaign, will wrap up the holiday season of giving on Saturday, December 19th at 7:00 p.m. in the Sanctuary. The concert is filled with the music of the holiday season and is FREE to the public, but in the spirit of giving, we ask that you consider bringing NEW, UNWRAPPED TOYS to the concert to donate at the door and help the Marines raise toys for underprivileged children. This

year, The Voices of GCC kids choir will join us in an evening filled with holiday magic, music and the wonderful opportunity to do something good this holiday season! It'll warm your heart! Bring your family and friends, but most of all— BRING SOME TOYS! For information, call 847-724-2210. Toys may also be dropped off at any of the Glenview Fire Stations from now through Dec. 19th!

Adult Education Seminar IN THE CHAPEL AT 9:30 a.m. December 13

The Adult Education will welcome members of our own PYF (Pilgrim Youth Fellowship) who will share some of their experiences they have had with PYF in general, and specifically their time at Work Camp.

Please join us at 9:30 a.m. in the Chapel to hear about how the young people in our church are making a difference in our community and the world.

Lectio Divina

Thursday, December 10 and the second Thursday of each month. Take a moment during the Advent season to bring prayer and meditation into your life. We meet from 9:30 a.m. to 11:00 a.m. in the Sanctuary.

Facilitator: Marilyn Belleau, Parish Nurse, (847) 724-2210 ext. 30.

GOAT DRIVE



BSA Troop 156

Now through December 16 boxes with signs are located next to the church office entrance and in the Narthex. The service project is being run by a scout youth.

New and gently used coats are appreciated. All sizes are welcome.



GCC Adult Work Camp – Back to Biloxi in 2010

We are going Back to Biloxi and you are invited! The GCC team that started Adult Workcamps announces plans to return to Biloxi, Mississippi from April 25 (Sunday) to May 1 (Saturday). All adults are welcome! This is a great way to show your love for your neighbor and get to know some new people along the way.

We have been going to Biloxi now for almost three years and believe it, there is still lots of work to do. There are still many communities that are severely impacted. The town of Pass Christian, about 10 minutes by car from Biloxi, was totally wiped out. It was completely sealed off by the government because the water supply had been destroyed. For many complicated reasons, they are just now beginning the process of rebuilding!

Last year, a group of 12 travelled by car and plane to New Orleans to enjoy the hospitality of city as we got a first hand view of the rebuilding. Then we headed off to Biloxi for

a week of fellowship and hard work. Most of our work involved helping to rebuild homes that had been destroyed by the hurricane. On our last trip, we did all of the final prep necessary to make a house a home. We painted, cleaned walls and floors, added trim and hardware. We also did an assortment of home repair projects for the elderly clients of the Back Bay Mission. If you weren't inclined to work on construction, there were many other activities to do as well. Back Bay operates a soup kitchen for the community and many of our folks helped prepare meals and stack food. There are projects for almost every skill level, even if you don't enjoy home repairs! We always accept assignments that meet the skill sets of our group.

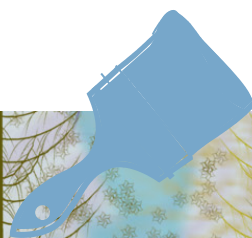
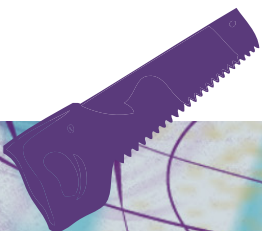
We are still in the early stages of planning, but we want to know how many people may be interested. There will be more planning meetings in early January. The costs vary, depending on how you travel, but the range is from \$400 – 700 (includes food,

lodging, air transportation, rental cars and other related fees).

If you want to be part of this year's work team or just want to know more, please contact Rob Orr, by email: rob@rob-or-rproductions.com or by phone (847)724-5228 or Pam Reidy email: gardenqueen@sbcglobal.net or call at (847)998-4746.

This is a great opportunity to share your skills and your time with folks who really can use our help.

The Adult Work Camp experience is available only to adults. It promotes a unique opportunity to share Christian fellowship with others and provides an opportunity to serve those who most need our help. Many have said that the GCC Adult Work Camp is the most rewarding outreach project they had ever experienced. We are seeking a few good folks to share in the fun and the work! Join us for an unforgettable, enriching experience.



GLENVIEW COMMUNITY CHURCH

1000 Elm Street
Glenview, IL 60025-2897

Phone: (847) 724-2210

Fax: (847) 724-2213

E-mail: gccucc@gccucc.org

Not for profit Organization
US POSTAGE PAID
Glenview, IL
Permit NO. 41

Office Hours

Monday - Friday

8:30 a.m. - 4:30 p.m.

Ministerial Staff

Rev. Dr. Howard Roberts, *Senior Minister*

Rev. Dr. Pamela Keckler, *Minister for Spiritual Formation*

Rev. Sally Iberg, *Minister for Mission and Ministry*

Directors:

Marilyn Belleau, *RN, Health Ministry*

Kathy Lifton, *Children's Ministry*

Elizabeth Ciccolini, *Youth Ministry*

Debby Shellard, *Children's Choirs*

Gary Wendt, *Organist, Instrumental Music*

Andrew Lewis, *Adult Choir*

Affiliates:

Marcia Kiraly, *Director, GCC Nursery School*

Barbara Thewis, *Manager, Resale Shop*

At A Glance

Thu 12-10	9:00 am 9:30 am 6:15 pm 7:30 pm	Resale Shop open until 5:00 p.m., Plymouth Rm Lectio Divina, Sanctuary Bell Choir, Bell Rm Chancel Choir, Sanctuary
Fri 12-11	9:00 am 7:00 pm 8:00 pm 8:00 pm	Resale Shop open until 1:00 p.m., Plymouth Rm Cub Scout Pack, Mayflower Rm AA, Parlor Al-Anon, Rm 201
Sat 12-12	9:00 am 9:00 am 9:00 am 9:00 am	Choir and Orchestra Rehearsal, Sanctuary Resale Shop open until 1:00 p.m., Plymouth Rm Men's Open Gym, Gym Confirmation Garage/Bake Sale, Mayflower Rm
Sun 12-13	9:15 am 9:30 am 9:30 am 9:30 am 9:30 am 9:30 am 9:45 am 10:30 am 11:30 am 11:30 am	Fellowship Hour, Mayflower Rm Adult Education, Chapel Confirmation Opening Prayers, Plymouth Rm 7th Grade Confirmation Class, Various Rms 8th Grade Confirmation Class, Youth Rm Fellowship Board, Rm 213 Primary Choir, Rm 201 Sunday School Gathering, Rm 201 Fellowship Hour, Mayflower Rm Confirmation Youth Board, Youth Rm

Sunday Continued

	11:45 am 4:00 pm 4:00 pm	Membership Board, Parlor PYFF, Youth Rm Voices of GCC, Rm 201
Mon 12-14	9:30 am 7:00 pm 7:00 pm	Finding My Spirit, Library Troop 156 Committee, Founders Philmont Scout Meeting, Plymouth Rm
Tues 12-15	12:00 pm 7:00 pm	60 Plus Luncheon, Mayflower Rm Executive Board, Mayflower Rm
Wed 12-16	9:00 am 1:00 pm 7:00 pm	Resale Shop until 1:00 pm, Plymouth Rm Good News Kitchen, Kitchen Planning Committee, Founders Rm

Broadcaster Deadline

Please submit all articles by 9:00 am, Wednesday, one week in advance to publishing via e-mail at tania.mccarthy@gccucc.org

